

LPG CONVERSION KIT

EC 230/600, EC 230/700, EC 230/960, EC 380/740, EC 380/980, EC 380/1220, EC 380/1400, EC 96/380

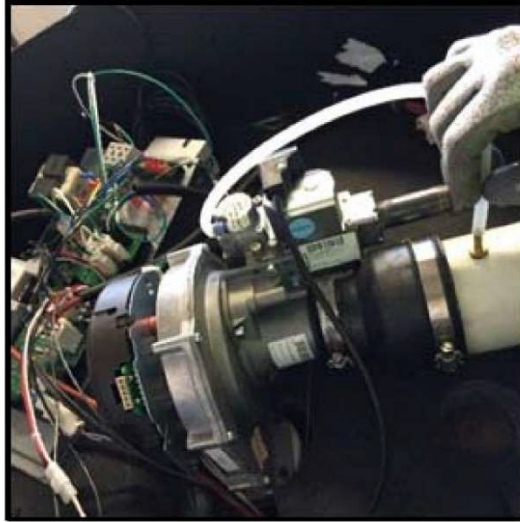
for ECOflo Water Heaters
Fitting instructions



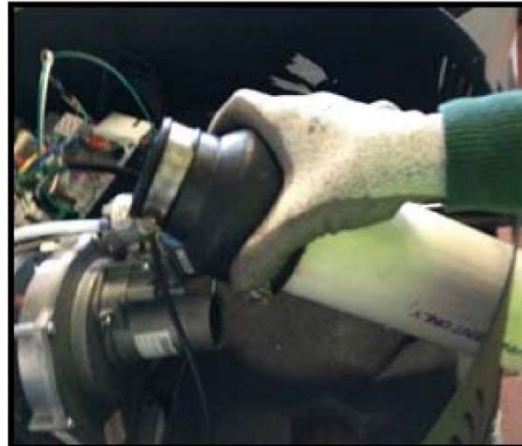
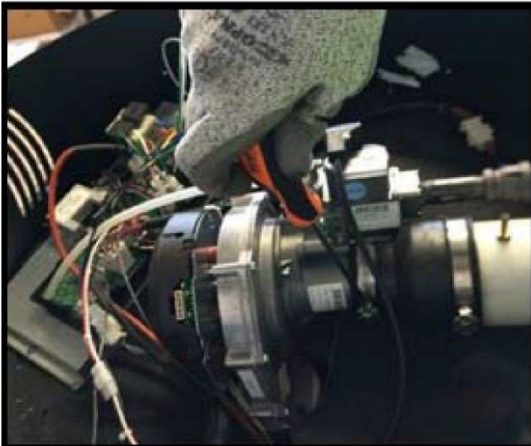
LPG CONVERSION KIT - RESERVED FOR INSTALLER

Pages 1 through 3 for all models except EC96/380. Disconnect the gas and electrical supply before installing LPG Conversion Kit.

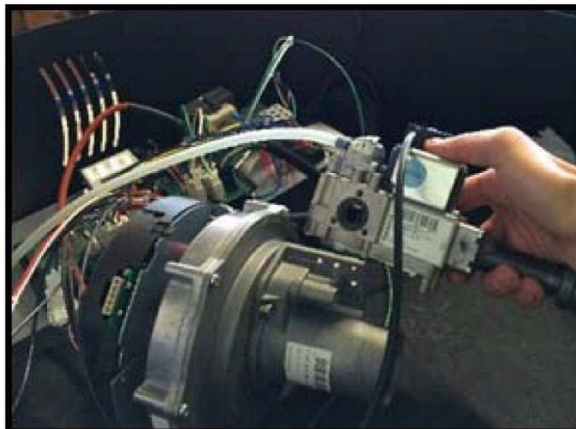
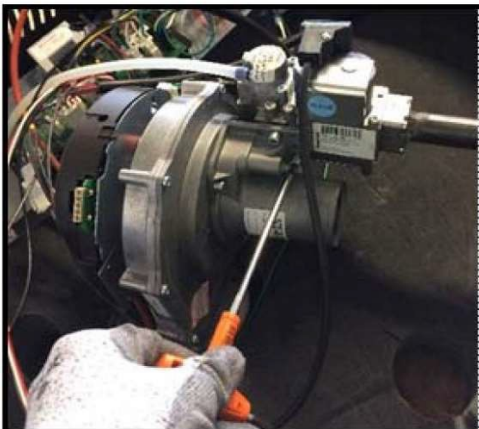
1. Remove the gas valve reference tube from the intake.



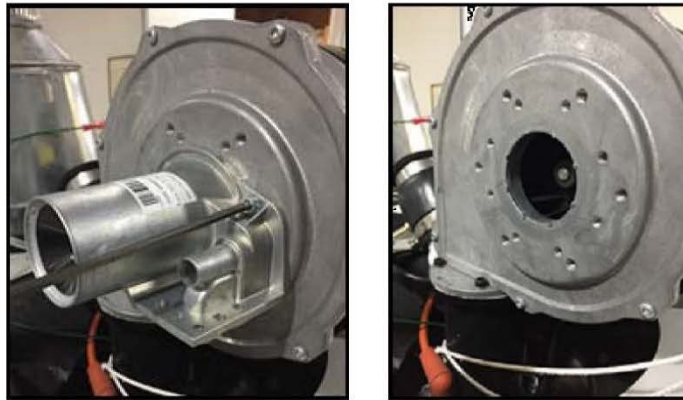
2. Loosen the air intake clamp. Remove the air intake from the venturi.



3. Loosen the 3 screws that attach the gas valve to the venturi with 5/32" (4 mm) Allen drive. Remove the gas valve from the venturi. Save the screws for reinstallation.



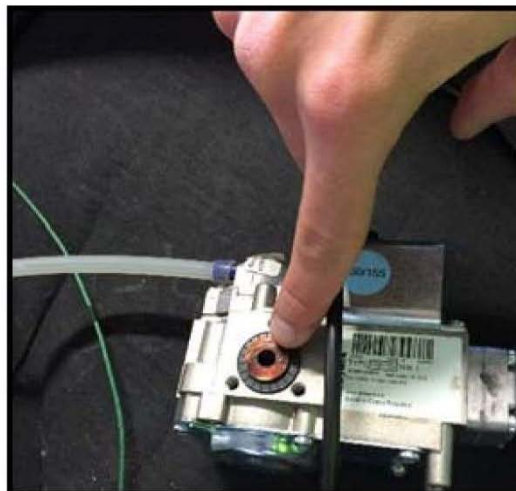
4. (Skip this step for EC230/600 and go to Step 6.) Remove the venturi from the blower by removing the 3 screws with a 5/32" (4 mm) Allen drive. Save the screws for reinstallation.



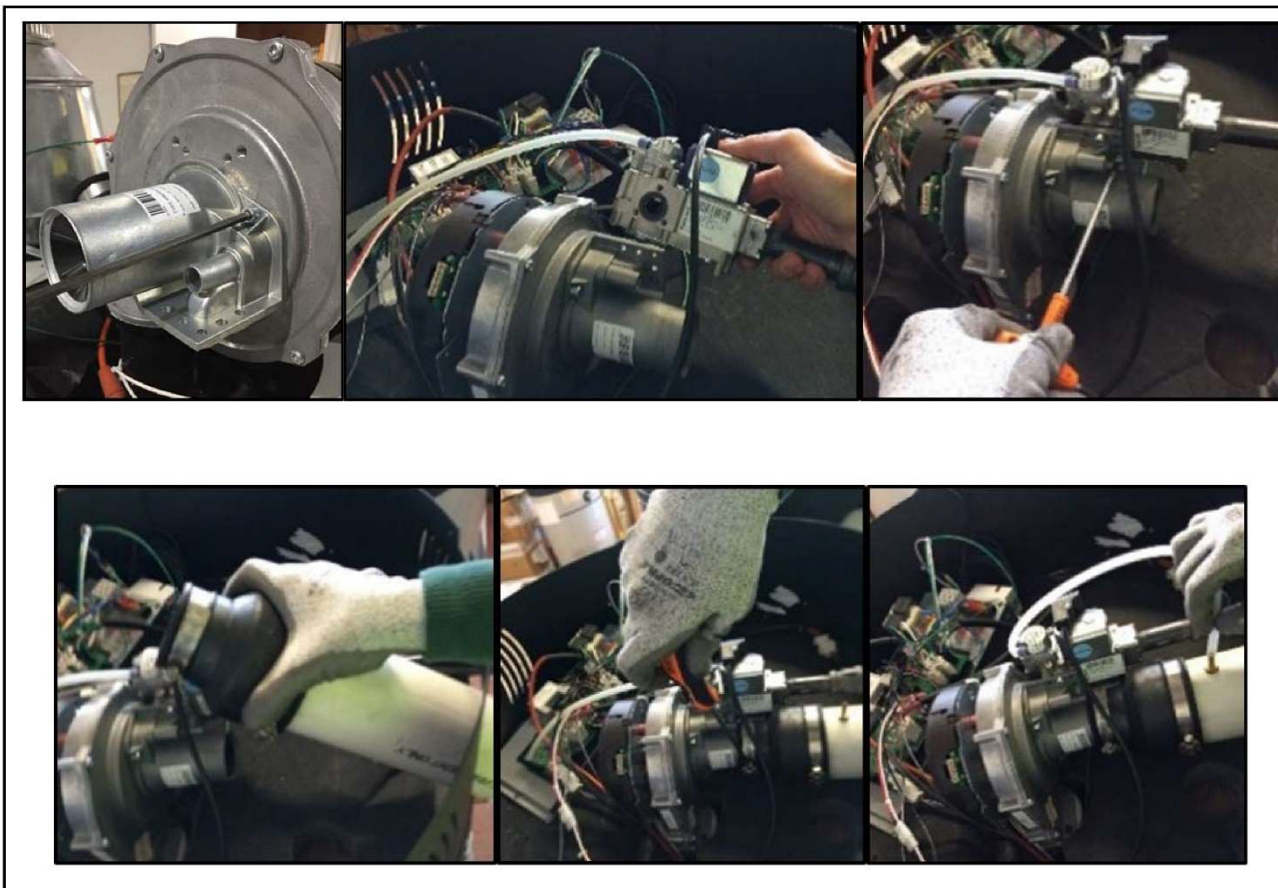
5. Install the cork gasket onto the new venturi included in the kit.



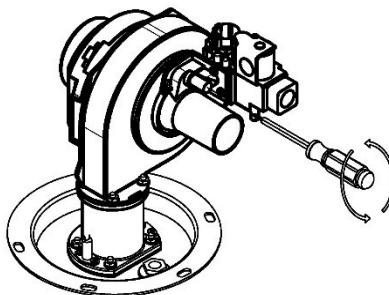
6. Install the orifice onto the gas valve.



7. Reassemble components in reverse order. Torque all screws to 25 in. lbs./ 2.8 Nm.



8. Connect gas and electrical supply to the water heater and check for gas leaks. Adjust the CO₂ percentage to the appropriate model data given in table 1 when water temperature is 55°C. Turn venturi screw counterclockwise to increase CO₂ percentage, and clockwise to decrease CO₂ percentage.



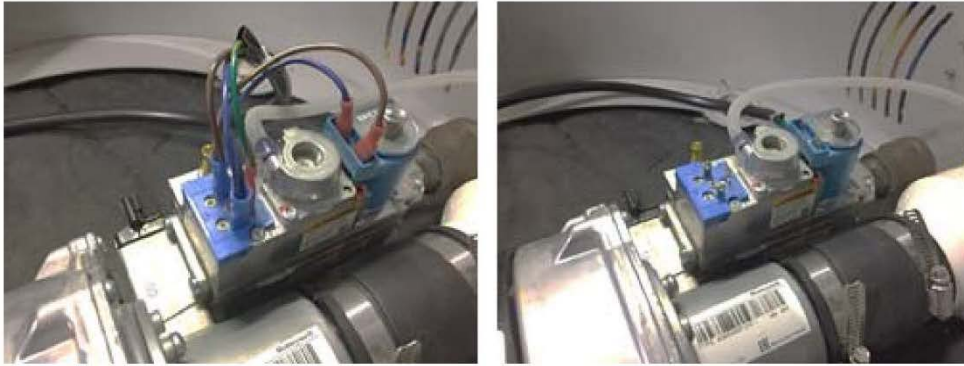
9. Attach the G31 conversion label to the water heater directly above the rating plate.

<p>THIS APPLIANCE MUST BE USED WITH THE INSTRUCTIONS OPERATING AND SERVICE THE TECHNICAL INSTRUCT THE APPLIANCE.</p> <p>WARNING: THIS APPLIANCE IS FOR GAS TYPE LISTED ON THE DATA LABEL ONLY AND MUST NOT BE USED WITH ANY OTHER GAS. REGULAR SERVICING AND ANODE INSPECTION IS ESSENTIAL.</p> <p>THIS WATER HEATER MUST ONLY BE INSTALLED OUTSIDE OR IN A ROOM SEPARATED FROM LIVING ROOMS AND PROVIDED APPROPRIATE VENTILATION DIRECTLY TO THE OUTSIDE.</p> <p>ANDREWS WATER HEATERS</p>	
<p>This appliance has been converted to operate with LP gas (G31).</p>	
LPG Supply Pressure	mbar
Heat Input (H _h)	kW
Country of Destination	GB/IE

Pages 4 through 8 for EC96/380.

Disconnect gas and electrical supply before installing LPG Conversion Kit.

1. Remove the gas valve harness from the gas valve.



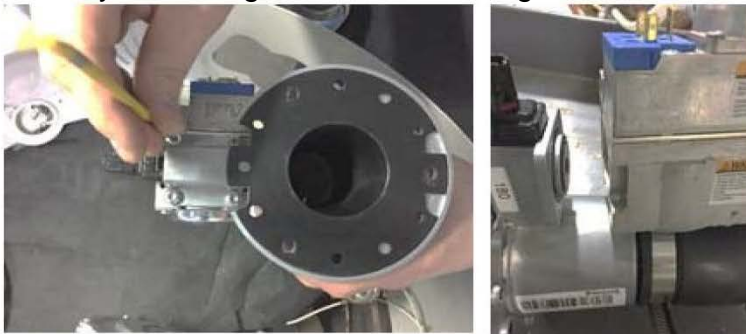
2. Remove the gas valve reference tube from the intake.



3. Remove the venturi/gas valve assembly from the blower by removing the 3 screws using a T30 Torx driver. Save the screws for reinstallation.



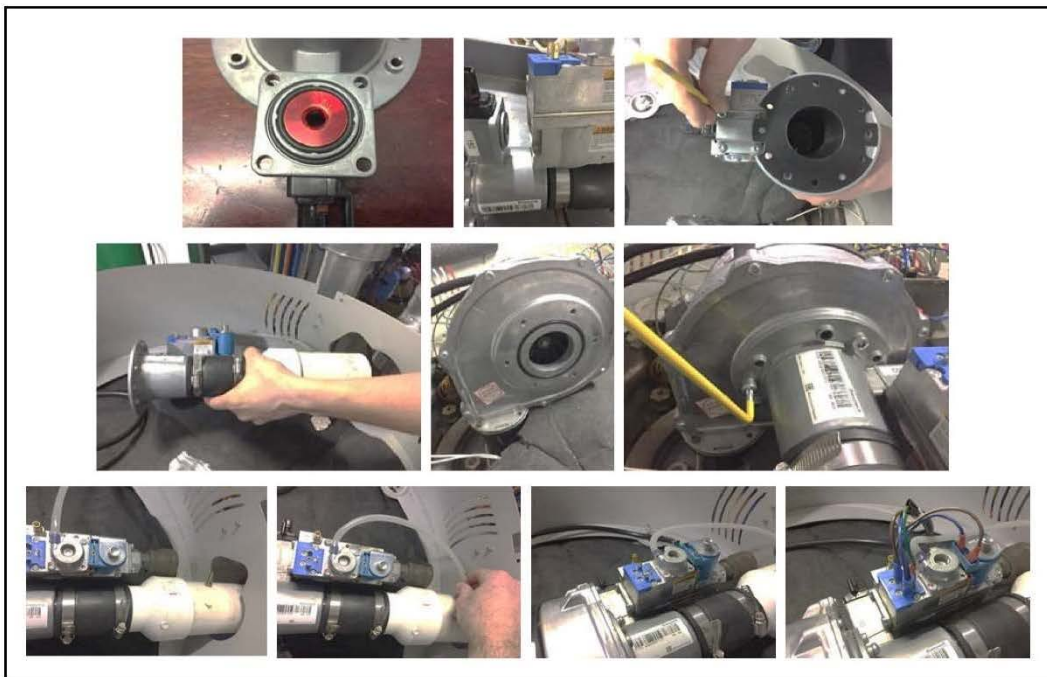
4. Remove the gas valve by loosening the 4 screws using a T25 Torx driver.



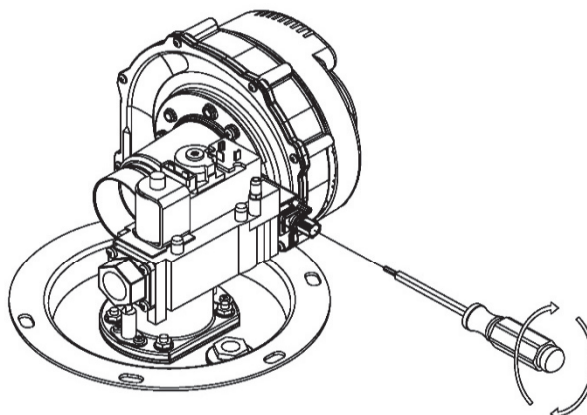
5. Install the inner O-Ring and the orifice included with the kit.



6. Reassemble components in reverse order. Torque all screws to 25 in. Lbs./2.8 Nm.



7. Connect gas and electrical supply to water heater and check for gas leaks. Adjust the CO₂ percentage to the appropriate model data given in Table 1 when water temperature is 55°C. Turn the venturi screw clockwise to increase CO₂ percentage, and counterclockwise to decrease CO₂ percentage.



8. Attach G31 conversion label to the water heater directly above the rating plate.

This appliance has been converted to operate with LP gas (G31).

LPG Supply Pressure	mbar
Heat Input (H _s)	kW
Country of Destination	GB/IE

238-53539

THIS APPLIANCE MUST BE USED WITH THE INSTRUCTIONS FOR OPERATING AND SERVICING THE TECHNICAL INSTRUCTIONS OF THE APPLIANCE.

WARNING: THIS APPLIANCE IS FOR GAS TYPE LISTED ON THE DATA LABEL ONLY AND MUST NOT BE USED WITH ANY OTHER GAS. REGULAR SERVICING AND ANODE INSPECTION IS ESSENTIAL.

THIS WATER HEATER MUST ONLY BE INSTALLED OUTSIDE OR IN A ROOM SEPARATED FROM LIVING ROOMS AND PROVIDED APPROPRIATE VENTILATION DIRECTLY TO THE OUTSIDE.

ANDREWS

WATER HEATERS

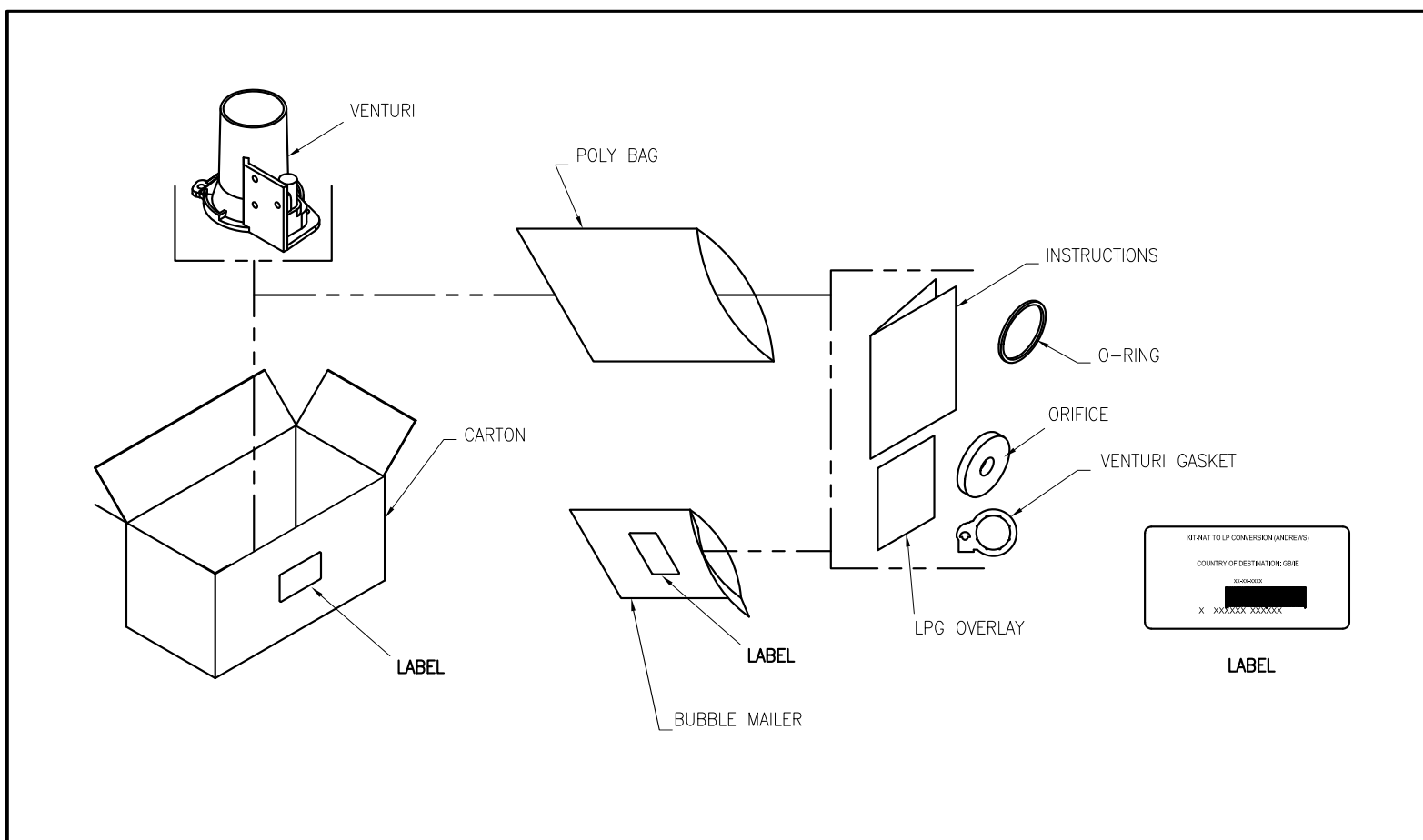
GAS SUPPLY PRESSURE

GAS propane (G31)	37 mbar
--------------------------	---------

Model Number	Heat Input HS kW	Gas Consumption m ³ /h	CO ₂ % {(0-8)m Vent Length}	CO ₂ % {(8.1-16)m Vent Length}	Orifice Colour and Size	Venturi Required
EC230/600	36.6	1.43	9.7-9.9	9.9-10.1	Blue, 5.1mm	No
EC230/700	43.9	1.72	10.8-11.0	11.3-11.5	Yellow, 5.6mm	Yes
EC230/960	58.3	2.28	10.9-11.1	11.5-11.7	Yellow, 5.6mm	Yes
EC380/740	43.9	1.72	11.7-11.9	11.8-12.0	Yellow, 5.6mm	Yes
EC380/980	58.3	2.28	10.5-10.9	11.3-11.7	Yellow, 5.6mm	Yes
EC380/1220	73.2	2.86	11.1-11.5	12.1-12.5	Yellow, 5.6mm	Yes
EC380/1400	82.0	3.2	10.0-10.4	11.2-11.6	Yellow, 5.6mm	Yes
EC96/380	102.6	3.87	9.5-9.7	10.1-10.3	Red, 7.0mm	No

Table 1: CO₂ bands.

LPG Conversion Kits CONTENTS



Varies by model.

LPG Conversion Kit (Part No)	Compatible with ECOflo (Part No)
7697588	A441 – ECOflo EC230/600
7697589	A442 – ECOflo EC230/700
7697590	A443 – ECOflo EC230/960
7697591	A444 – ECOflo EC380/740
7697592	A445 – ECOflo EC380/980
7697593	A446 – ECOflo EC380/1220
7697594	A447 – ECOflo EC380/1400
7763225	7763224 – ECOflo EC96/380

Sales 0345 070 1055

Technical 0345 070 1057

Web andrewswaterheaters.co.uk



[linkedin.com/company/andrews-water-heaters](https://www.linkedin.com/company/andrews-water-heaters)



@AndrewsWH

Registered office address: Baxi Heating UK, Brooks House, Coventry Road, Warwick CV34 4LL

Oct 2020

Andrews. Built to perform.

ALL TOGETHER BETTER



BAXI HEATING HAS A PORTFOLIO OF SOME OF THE BEST KNOWN AND MOST RESPECTED COMMERCIAL BRANDS IN THE HEATING INDUSTRY ACROSS THE UK AND IRELAND: • REMEHA, • ANDREWS WATER HEATERS, • POTTERTON COMMERCIAL AND • PACKAGED PLANT SOLUTIONS.

BAXI HEATING COMMERCIAL BRANDS



- **REMEHA** - ENGINEERING EFFICIENCY SINCE 1935
Reliably engineering high-performance and high-efficiency heating solutions.
- **ANDREWS WATER HEATERS** - BUILT TO PERFORM
UK's No. 1 commercial water heaters of choice for quality and reliability.
- **POTTERTON COMMERCIAL** - TOTALLY DEPENDABLE
Heating solutions that customers can rely on and services they can trust.
- **PACKAGED PLANT SOLUTIONS** - INGENUITY BOXED
Leading specialists in prefabricated plant rooms from concept to completion.