

T/ D 005

GAS FIRED STORAGE WATER HEATERS

Standard Range**Pilot Monitoring Pack**

Fitting instructions for pilot monitoring pack assembly Part No. B108
Suitable for Andrews "Standard Range" Water Heaters

Pack Parts List

- 1 x Pressure Switch complete with Mounting Bracket and Elbow
- 4 x No.8 Self-Tapping Screws
- 1 x 65mm long Alloy Tube
- 1 x 400mm long Alloy Tube
- 5 x 1/4 Nuts
- 5 x 1/4 Olives
- 1 x 1/4 Tee

Function

A sensitive pressure switch is connected by means of the fittings and tubes supplied to the pilot gas line.

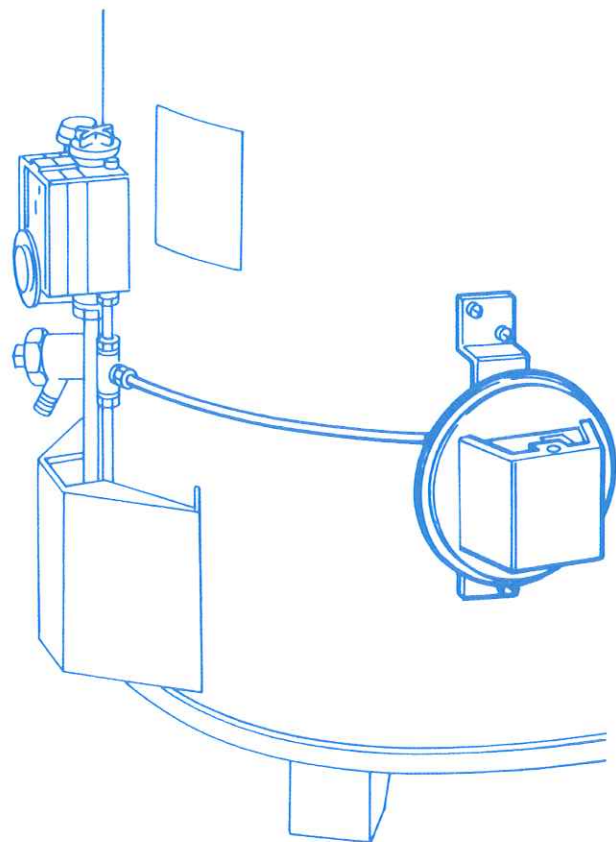
Connect the electrical supply input to Terminal No.1 (common) output to Warning Indicator Terminal No.2 (N/C). Max 2 amp load.

The switch must also be earthed. Adjust the switch to give closed circuit across terminals No.1 and No.2.

The pilot is then lit, the gas pressure will open contacts No.1 and No.2. In the event of gas pressure loss, the contacts will close, indicating pilot failure.

Fitting Instructions

1. Remove pilot feed tube from water heater control valve.
2. Fit short alloy tube complete with tee to pilot outlet on control valve.
3. Refit pilot tube into bottom of the tee.
4. Mark out pressure switch bracket fixing hole on water heater casing, drill holes with 3mm drill, fix assembly using 4 x No.8 self tapping screws.
5. Fit long length of alloy tube to the side outlet of the tee and connect other end into the pressure switch elbow.
6. Wire control circuit to No.1 common. No.3 normally open on the pressure switch.
7. Test joints for gas leaks.



ANDREWS WATER HEATERS

GAS FIRED STORAGE WATER HEATERS

Hi-flo Range

Pilot Monitoring Pack

Fitting instructions for pilot monitoring pack assembly Part No. B108
Suitable for Andrews "Hi-Flo Range" Water Heaters

Pack Parts List

- 1 x Pressure Switch complete with Mounting Bracket and Elbow
- 4 x No.8 Self-Tapping Screws
- 1 x 65mm long Alloy Tube
- 1 x 400mm long Alloy Tube (Standard)
- 5 x 1/4 Nuts
- 5 x 1/4 Olives
- 1 x 1/4 Tee

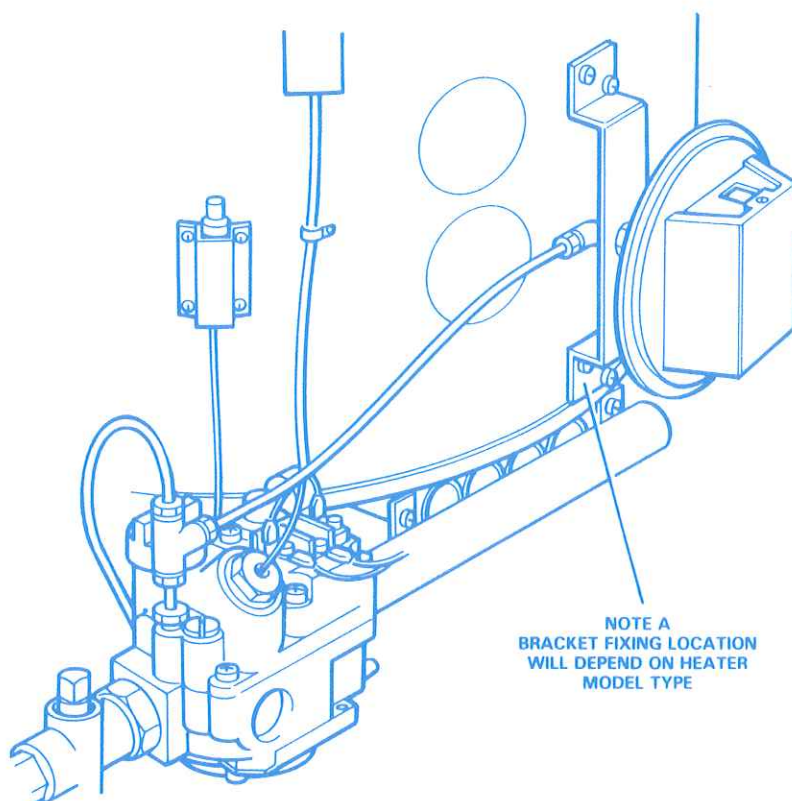
Function

A sensitive pressure switch is connected by means of the fittings and tubes supplied to the pilot gas line.

Connect the electrical supply input to Terminal No.1 (common) output to Warning Indicator Terminal No.2 (N/C). Max 2 amp load.

The switch must also be earthed. Adjust the switch to give closed circuit across terminals No.1 and No.2.

The pilot is then lit, the gas pressure will open contacts No.1 and No.2. In the event of gas pressure loss, the contacts will close, indicating pilot failure.



Fitting Instructions

1. Remove pilot feed tube from water heater control valve.
2. Fit short alloy tube complete with tee to pilot outlet on control valve.
3. Refit pilot tube into top outlet of the tee.
4. Mark out pressure switch bracket fixing hole on heater casing body, drill holes with 3mm drill, fix assembly using 4 x No.8 self tapping screws (see note 'A')
5. Fit long length of alloy tube to the side outlet of the tee and connect other end into the pressure switch elbow.
6. Wire control circuit to No. 1 common. No. 3 normally open on the pressure switch.
7. Test joints for gas leaks.

If further information is required please contact Andrews Water Heaters

Since it is our policy to strive for progressive design and performance all our equipment is subject to alteration without notice.



Andrews Water Heaters
Wood Lane, Erdington
Birmingham B24 9QP
Telephone: 0845 070 1058 Fax: 0845 070 1059
E-mail: andrews@andrews-waterheaters.co.uk
www.andrewswaterheaters.co.uk